

Supplement of Hydrol. Earth Syst. Sci., 21, 2127–2142, 2017
<http://www.hydrol-earth-syst-sci.net/21/2127/2017/>
doi:10.5194/hess-21-2127-2017-supplement
© Author(s) 2017. CC Attribution 3.0 License.



Hydrology and
Earth System
Sciences

Open Access



Supplement of

Temporal and spatial changes of rainfall and streamflow in the Upper Tekezē–Atbara river basin, Ethiopia

Tesfay G. Gebremicael et al.

Correspondence to: Tesfay G. Gebremicael (t.gebremicael@unesco-ihe.org, dutg2006@gmail.com)

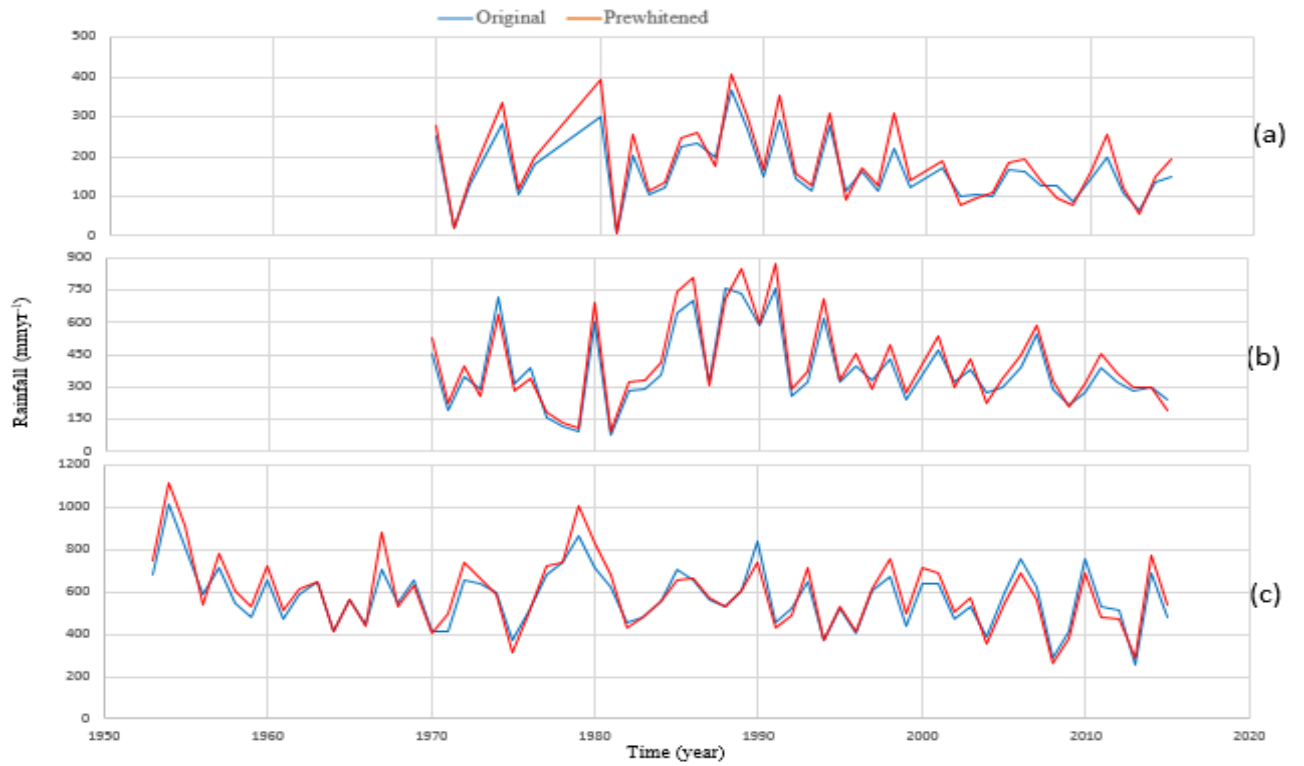
The copyright of individual parts of the supplement might differ from the CC-BY 3.0 licence.

Table S1. Summary results of MK, Z statistics on monthly rainfall trends. Negative/positive Z value indicates a decreasing/increasing trend and in bold a statistical significant trend at 5 % confidence level ($Z = \pm 1.96$).

Station	Statistics	Jan	Feb	Mar	Apr	May	Jun	Jul	Aug	Sep	Oct	Nov	Dec
Makele (AP)	Z	-1.04	-0.57	0.54	-1.56	0.44	1.07	-0.38	-1.45	-1.40	2.10	1.67	5.45
	P	0.30	0.56	0.60	0.13	0.66	0.30	0.57	0.39	0.16	0.04	0.1	0.00
Adigrat	Z	0.95	-0.66	0.32	-0.23	1.16	0.48	-1.18	-1.07	-1.41	0.56	-0.17	1.99
	P	0.34	0.51	0.79	0.82	0.25	0.65	0.24	0.33	0.39	0.58	-0.09	0.04
Mychew	Z	1.90	-2.86	-1.14	-0.56	1.13	0.94	0.32	0.35	0.26	0.68	2.24	-0.28
	P	0.06	0.02	0.26	0.58	0.26	0.35	0.75	0.73	0.80	0.50	0.026	0.78
Shire	Z	0.82	-0.64	1.32	-0.38	1.32	2.64	-0.65	0.28	2.29	0.28	0.52	0.18
	P	0.41	0.53	0.19	0.68	0.21	0.02	0.63	0.74	0.02	0.77	0.61	0.86
D/tabour	Z	2.44	2.11	1.83	0.72	0.69	-0.04	-1.90	-1.93	-0.55	0.14	2.17	3.59
	P	0.05	0.04	0.06	0.47	0.48	0.95	0.07	0.07	0.54	0.21	0.03	0.00
Mykinetal	Z	-2.95	-2.40	-0.96	-1.90	-0.50	0.49	-1.79	1.21	2.60	-0.72	-1.19	-2.36
	P	0.003	0.02	0.34	0.06	0.62	0.55	0.08	0.20	0.01	0.50	0.24	0.04
Gonder	Z	-1.49	0.15	-1.41	0.59	0.25	1.01	-0.28	0.13	0.52	0.17	-1.66	-1.79
	P	0.14	0.88	0.16	0.54	0.70	0.41	0.78	0.87	0.66	0.87	0.10	0.08
Adigudem	Z	4.98	-2.56	0.22	0.98	-0.47	-0.68	0.36	0.21	0.24	-0.23	3.95	5.26
	P	0.001	0.01	0.83	0.09	0.65	0.16	0.62	0.16	0.81	0.82	0.001	0.001
H/selam	Z	0.00	-1.13	-1.65	-2.99	0.48	-0.27	-0.62	0.19	0.12	-0.51	-0.58	1.42
	P	0.98	0.001	0.23	0.68	0.65	0.75	0.11	0.80	0.92	0.56	0.16	0.03
Hawzen	Z	-0.48	-1.60	-0.51	-0.55	-0.42	0.08	-0.08	0.37	0.07	-0.91	0.00	-1.13
	P	0.11	0.06	0.55	0.58	0.40	0.93	0.92	0.40	0.92	0.36	1.0	0.26
Wukro	Z	-6.15	-3.79	-1.48	-0.90	-1.95	1.11	0.10	1.10	-1.09	-0.88	-1.30	-2.60
	P	0.001	0.001	0.14	0.35	0.06	0.22	0.75	0.22	0.38	0.38	0.20	0.01
Abiadi	Z	-1.56	-1.90	-2.27	-2.27	-1.85	1.78	0.72	0.32	1.73	-0.58	-0.40	2.98
	P	0.12	0.06	0.02	0.02	0.06	0.06	0.10	0.14	0.06	0.56	0.71	0.00
Demgolat	Z	-1.47	-3.44	0.05	-0.08	1.09	0.03	0.13	1.82	0.01	-2.12	-0.48	-2.42
	P	0.14	0.001	0.95	0.86	0.31	0.97	0.83	0.06	0.99	0.03	0.63	0.02
E/hamus	Z	-1.63	-1.10	-2.45	-1.62	-1.02	-0.95	0.21	-0.64	-0.59	-0.86	0.33	-1.58
	P	0.10	0.04	0.02	0.08	0.31	0.39	0.85	0.53	0.56	0.39	0.74	0.08
Adwa	Z	0.25	-0.76	0.24	0.33	1.01	0.96	0.81	2.19	1.32	0.35	1.13	0.48
	P	0.68	0.45	0.81	0.74	0.30	0.29	0.23	0.01	0.12	0.73	0.27	0.09
Axum	Z	-1.64	-3.52	-1.09	0.20	0.12	0.61	-0.72	0.91	2.25	-1.26	-0.02	0.53
	P	0.10	0.00	0.32	0.81	0.83	0.43	0.48	0.26	0.03	0.21	0.98	0.60
Debark	Z	1.34	-2.94	1.70	0.31	0.82	1.20	1.92	0.51	-0.43	-0.97	-1.11	0.17
	P	0.18	-0.001	0.12	0.61	0.44	0.09	0.06	0.36	0.51	0.33	0.29	0.87
Lalibela	Z	1.10	1.74	0.85	-0.22	1.28	1.32	1.17	2.59	4.41	0.71	0.06	0.67
	P	0.27	0.05	0.40	0.83	0.23	0.20	0.11	0.01	0.001	0.48	0.95	0.01
Samre	Z	-6.68	-1.22	-0.54	-0.14	-0.68	-2.21	-0.08	-0.04	0.89	-0.29	-1.04	-2.17
	P	0.001	0.03	0.59	0.90	0.50	0.03	0.91	0.95	0.37	0.77	0.30	0.03

5 Table S2. Summary results of Pettitt test on seasonal rainfall. Negative/positive K value indicates a decreasing/increasing trend and in bold a statistical significant trend at 5 % confidence level.

Station name	Statistical indices	Periods/season			
		annual	Rainy	Dry season	Short rainy
Mekelle (AP)	K	122	60	129	200
	P	0.55	1.0	0.52	0.10
Mychew	K	230	212.	242	174
	P	0.20	0.3	0.18	0.549
Axum	K	242	168	148	100
	P	0.04	0.30	0.44	0.85
Gonder	K	131	126	146	122
	P	0.51	0.55	0.38	0.60
Adwa	K	360	301	177.	135
	P	0.06	0.01	0.21	0.52
Mykinetal	K	122	109	184	184.
	P	0.56	0.68	0.13	0.13
Shire	K	-242	178	184	152
	P	0.03	0.12	0.11	0.25
Adigrat	K	167	165	91	93
	P	0.20	0.21	0.85	0.83
Adigudem	K	122	60	129	200
	P	0.55	1.0	0.52	0.10
Edagahamus	K	78	112	218	121
	P	0.07	0.52	0.03	0.11
Hawzen	K	96	184	218	201
	P	0.83	0.16	0.06	0.10
Hagereselam	K	122	118	112	105
	P	0.50	0.08	0.61	-0.70
AbiAdi	K	150	176	112	-176
	P	0.06	0.08	0.09	0.07
Debretabour	K	137	188	176	97
	P	0.34	0.05	0.06	0.65
Dengolat	K	162	162	140	64
	P	0.09	0.10	0.20	0.94
Lalibela	K	72	64	108	127
	P	0.28	0.41	0.33	0.13
Wukro	K	100	158	230	186
	P	0.42	0.05	0.09	0.11
Kulmesk	K	16	14	20	32
	P	0.65	0.77	0.41	0.05
Debark	K	54	82	71	68
	P	0.04	0.06	0.15	0.17
Samre	K	184	118	85	67
	P	0.16	0.64	0.07	0.05



5

Figure. S1: Comparison of rainfall data before and after removal of auto-correlation: (a) monthly rainfall in Adigrat for August, (b) main rainy season in Adigrat, (c) annual rainfall in Mekelle (AP)

10

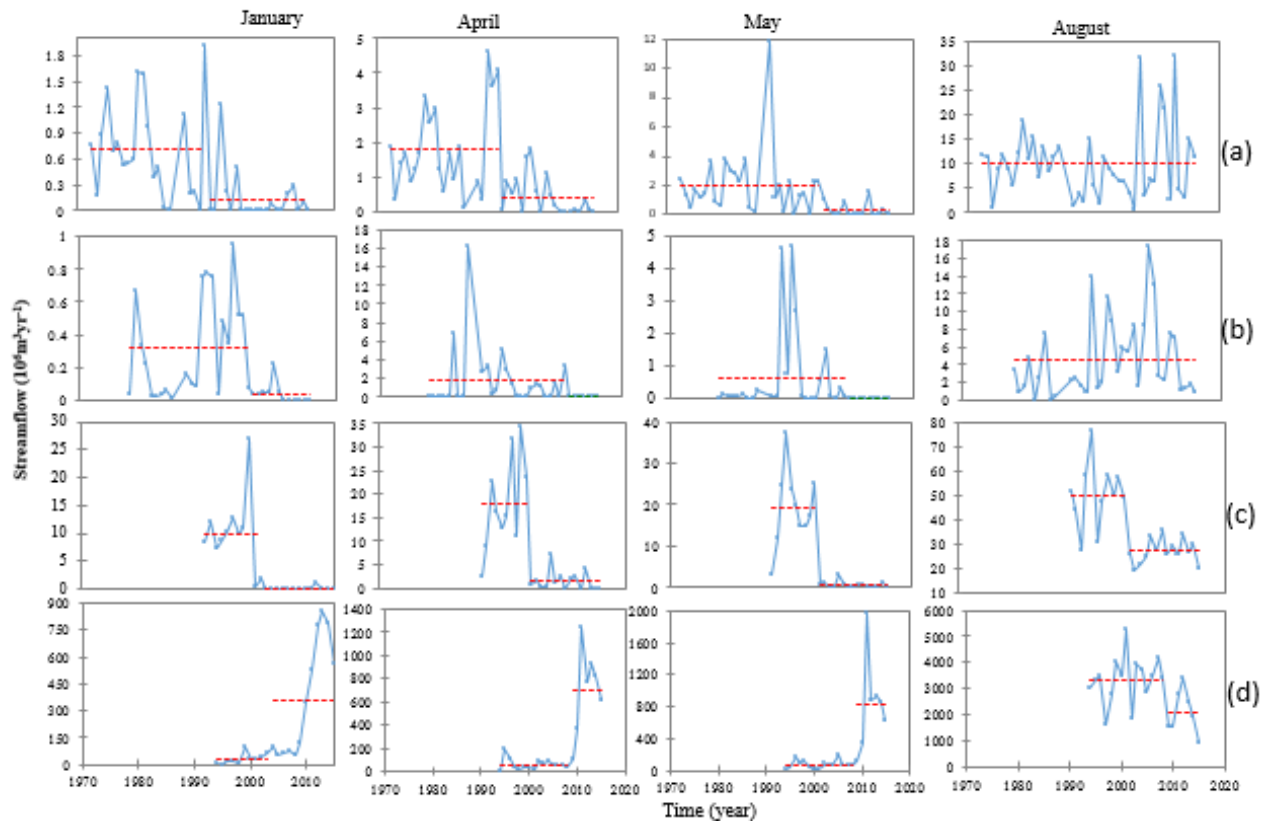
15



5

Figure. S2: Comparison of streamflow data before and after removal of auto-correlation at Geba 1 station: (a) monthly for August, (b) main rainy season, (c) annual

10



5

Figure S3. Pettitt homogeneity test on monthly streamflow for selected stations (a) Siluh, (b) Illala, (c) Geba 1, (d) Emabamadre.

10