

Supplementary Material.

Figures S1 to S24, show the expected relative seasonal changes in daily absolute precipitation (mm/day) and daily mean temperature (°C) throughout the XXI century per meteorological station and each of the climate change studied scenarios (RCP4.5 and RCP8.5). Results are shown as 30-years moving average against the 1971-2000 average (used as a reference). The vertical dotted line indicates the end of the historical experiment (black) and the start of the RCPs. Thick lines show the median of the values for all models; the shaded area indicates ranges from the 10th to 90th percentiles. Seasons are indicated by the initial letter of their months.

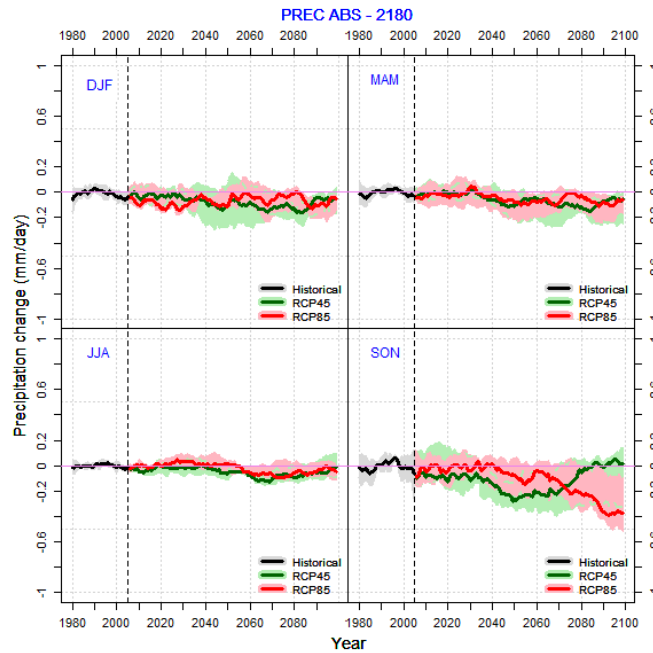


Figure S1. Seasonal changes in daily absolute precipitation in the Matabuena meteorological station (code 2180).

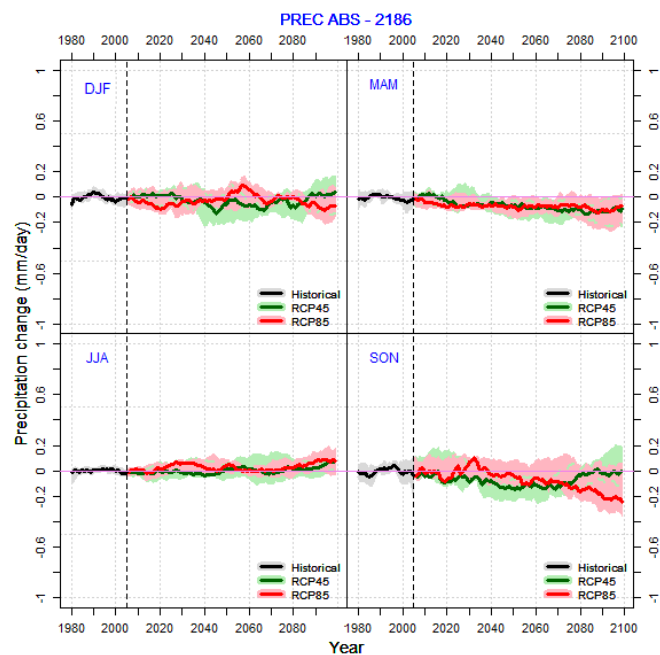


Figure S2. Seasonal changes in daily absolute precipitation in the Turégano meteorological station (code 2186).

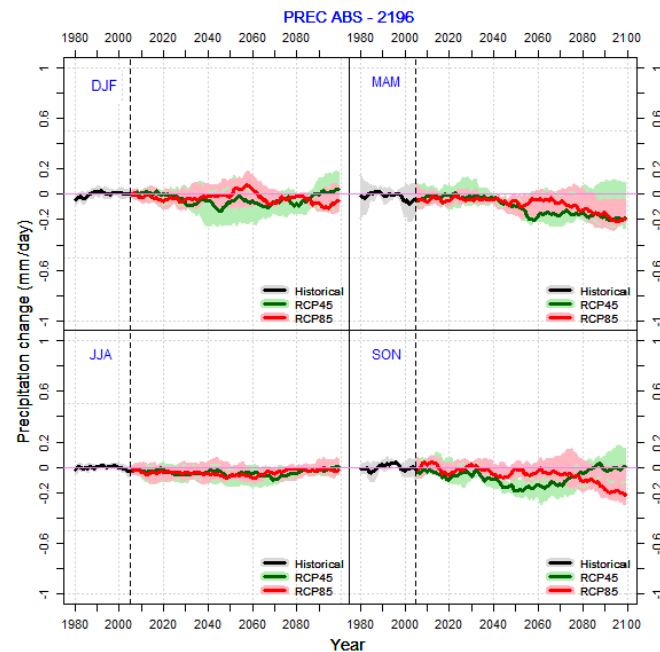


Figure S3. Seasonal changes in daily absolute precipitation in the Torreiglesias meteorological station (code 2196).

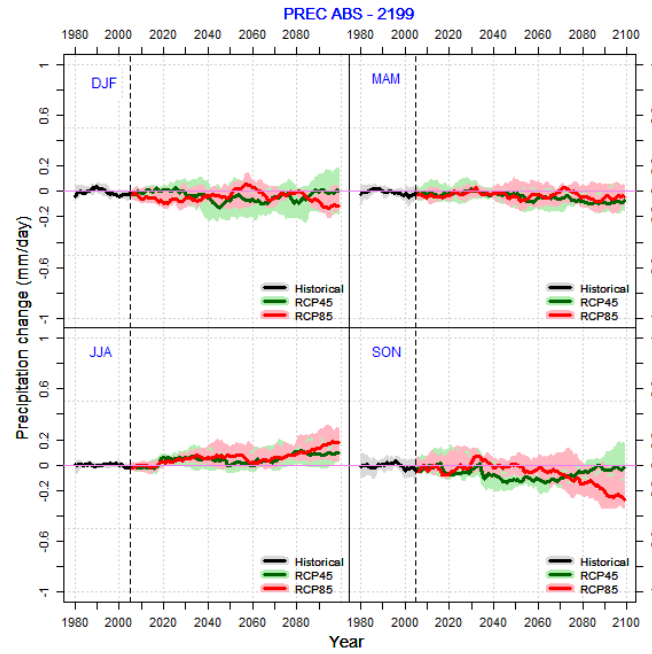


Figure S4. Seasonal changes in daily absolute precipitation in the Cantimpalos meteorological station (code 2199).

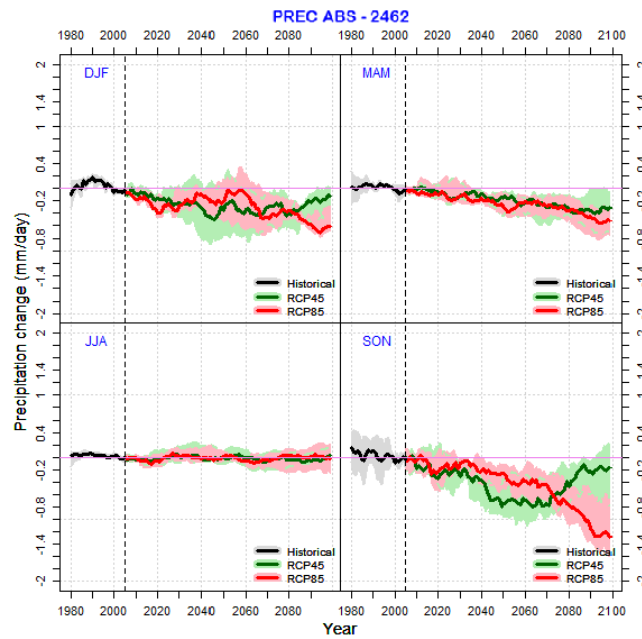


Figure S5. Seasonal changes in daily absolute precipitation in the Puerto de Navacerrada meteorological station (code 2462).

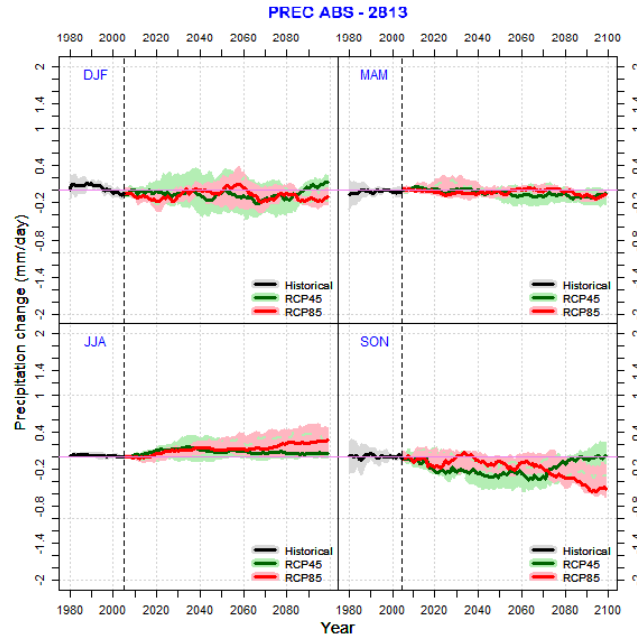


Figure S6. Seasonal changes in daily absolute precipitation in the Navacepeda de Tormes meteorological station (code 2813).

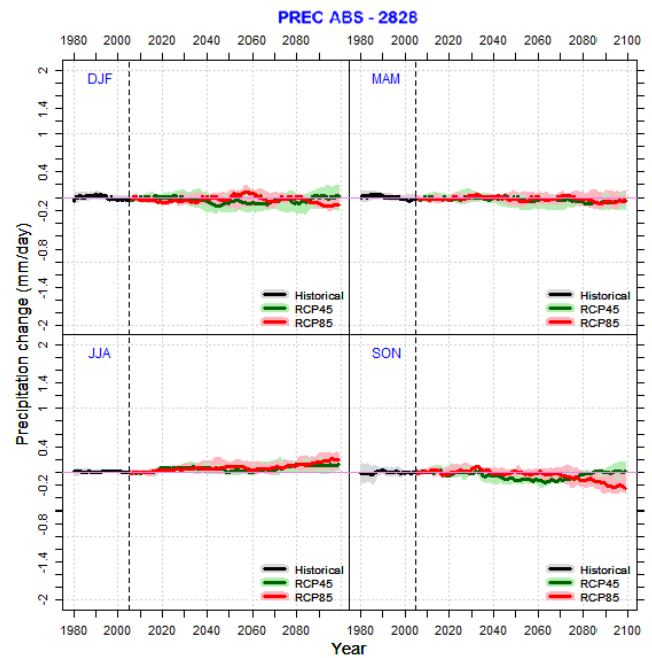


Figure S7. Seasonal changes in daily absolute precipitation in the El Barco de Ávila meteorological station (code 2828).

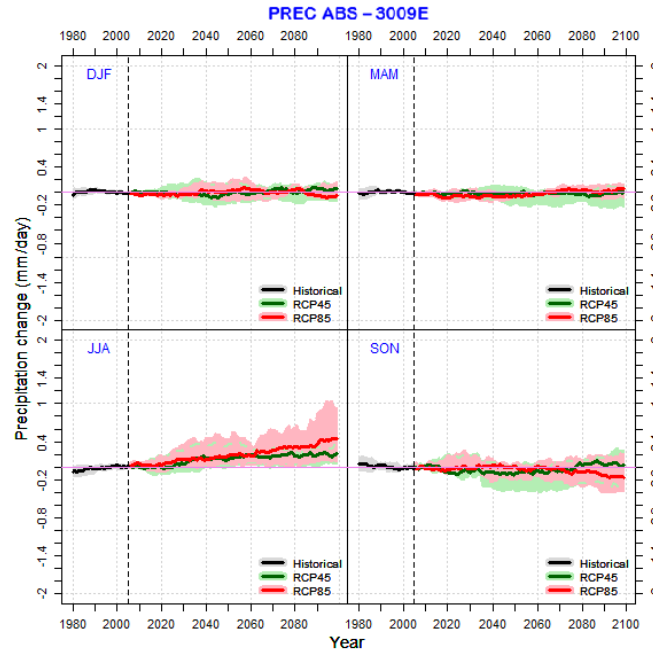


Figure S8. Seasonal changes in daily absolute precipitation in Orihuela del Tremedal meteorological station (code 3009E).

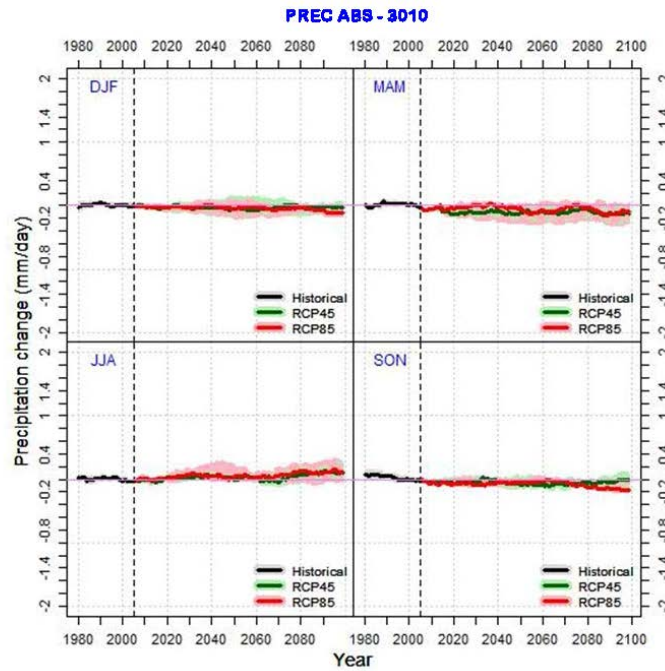


Figure S9. Seasonal changes in daily absolute precipitation in Ródenas meteorological station (code 3009E).

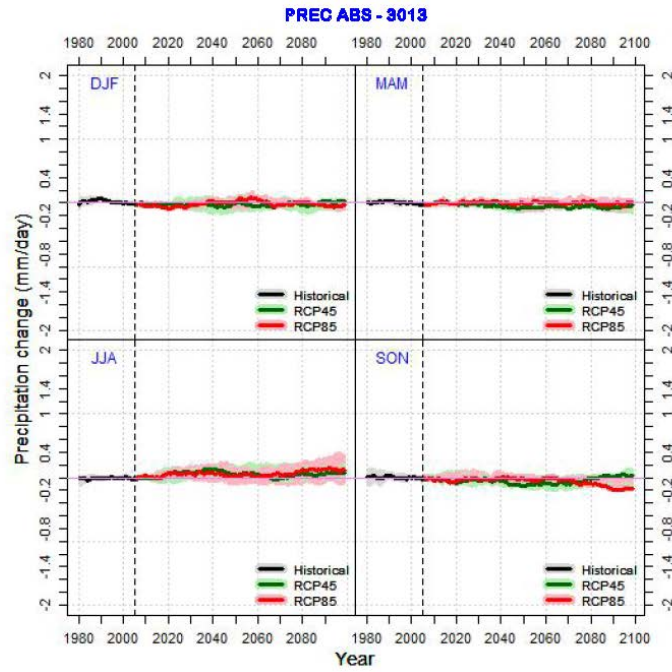


Figure S10. Seasonal changes in daily absolute precipitation in Molina de Aragón meteorological station (code 3009E).

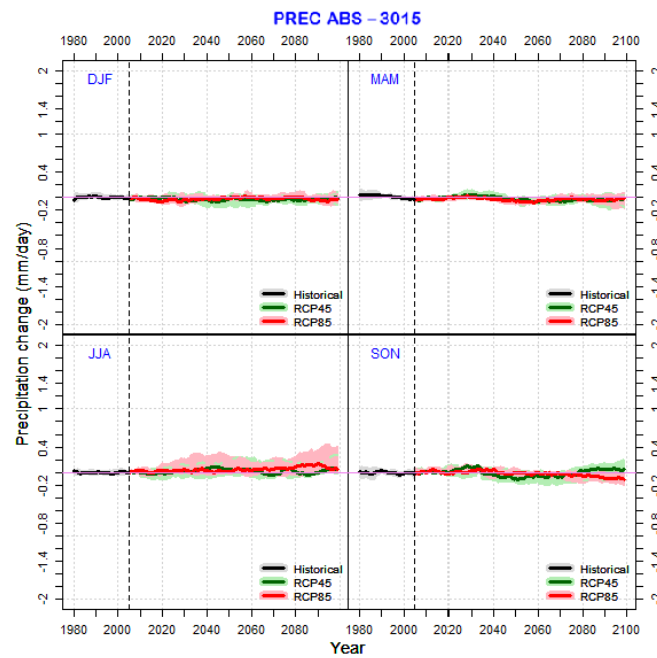


Figure S11. Seasonal changes in daily absolute precipitation in Corduente meteorological station (code 3015).

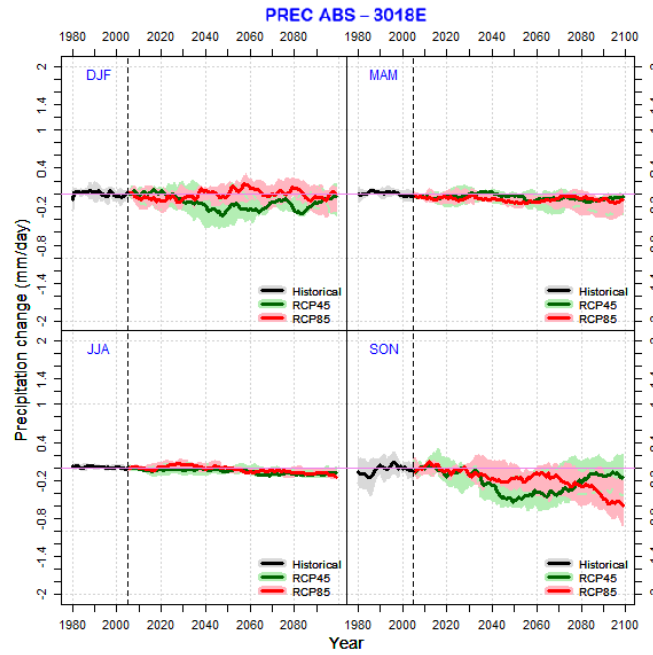


Figure S12. Seasonal changes in daily absolute precipitation in Aragoncillo meteorological station (code 3018E).

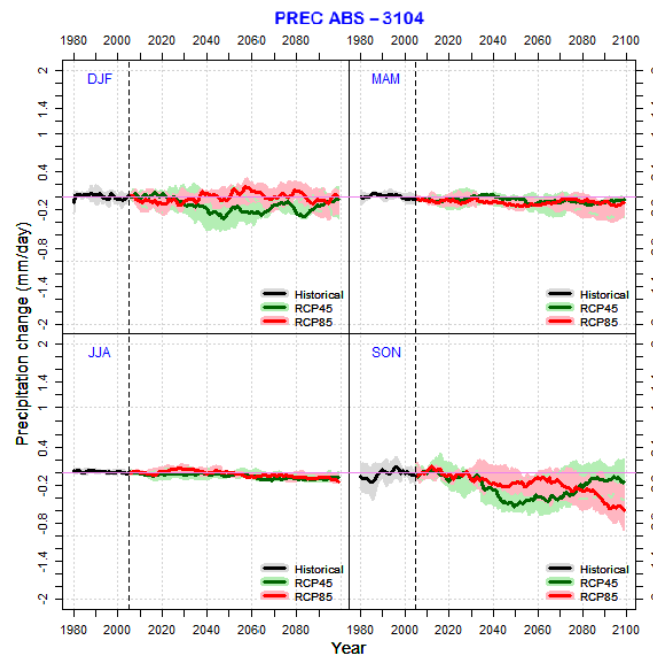


Figure S13. Seasonal changes in daily absolute precipitation in Rascafría-El Paular meteorological station (code 3104).

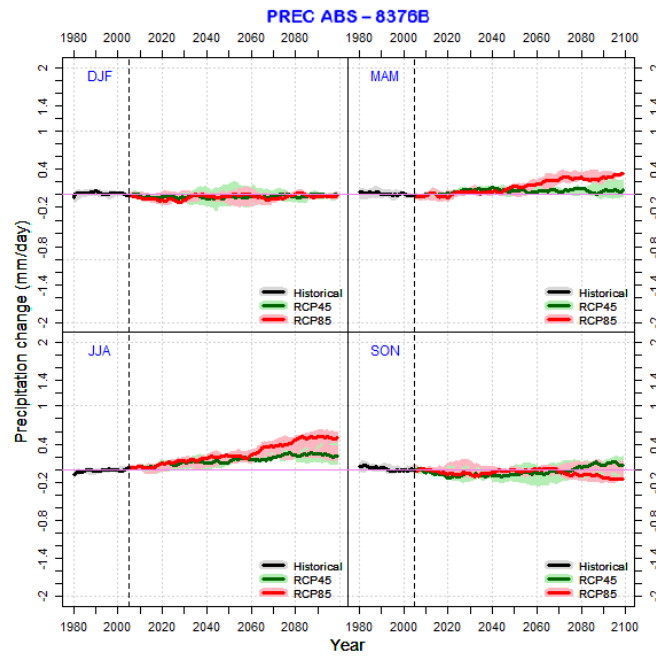


Figure S14. Seasonal changes in daily absolute precipitation in Jabaloyas meteorological station (code 8376B).

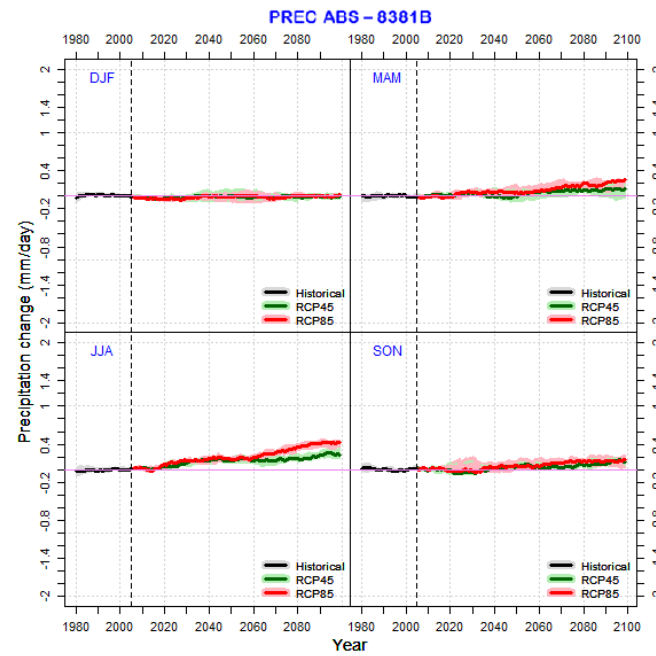


Figure S15. Seasonal changes in daily absolute precipitation in Ademuz-Agro meteorological station (code 8381B).

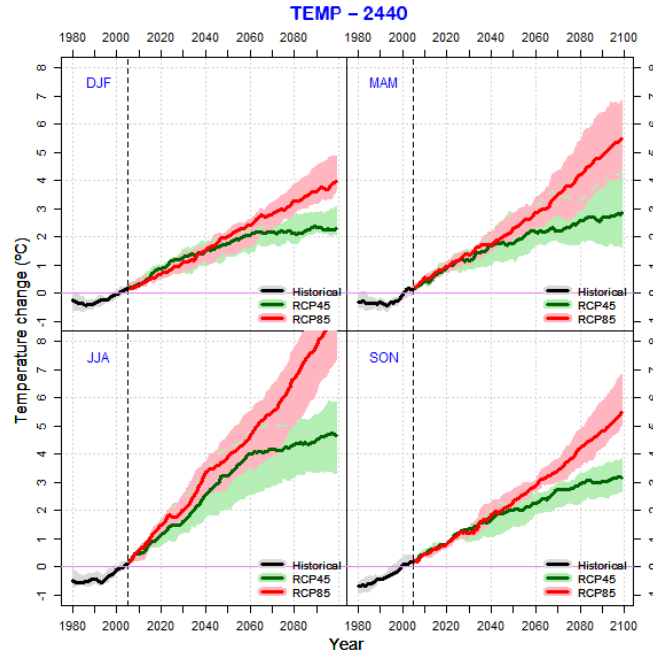


Figure S16. Seasonal changes in daily mean temperature in Aldea del Rey Niño meteorological station (code 2440).

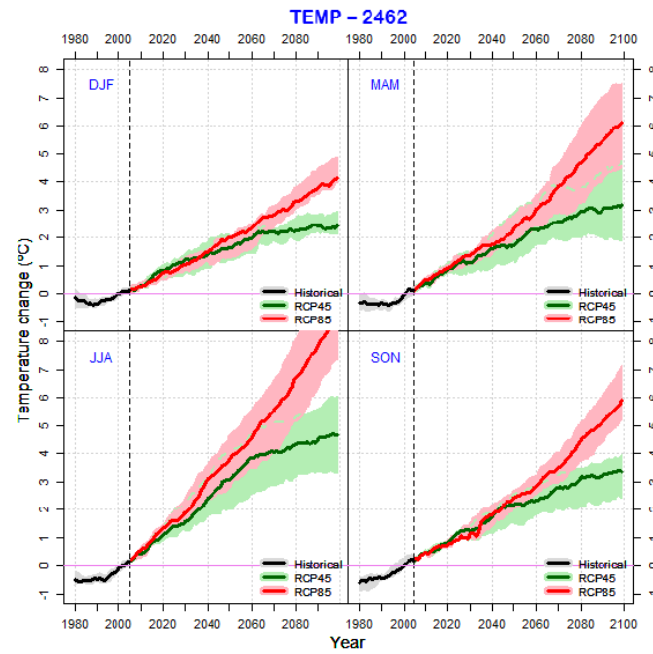


Figure S17. Seasonal changes in daily mean temperature in Puerto de Navacerrada meteorological station (code 2462).

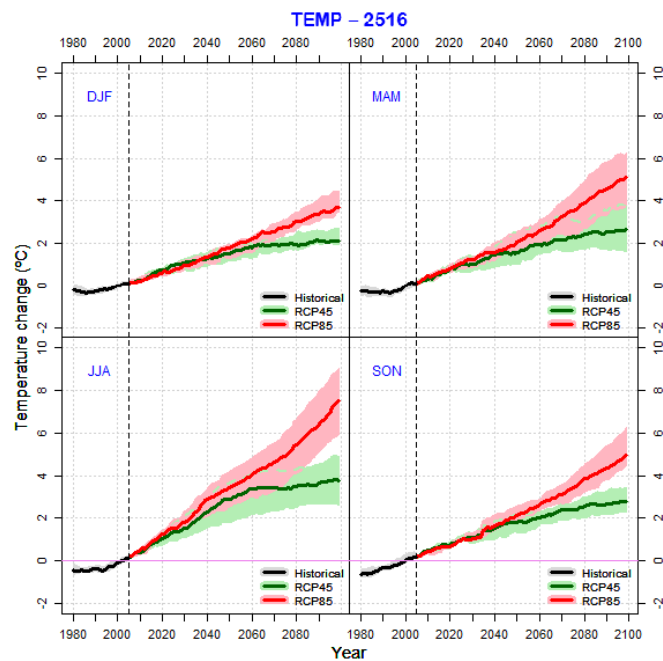


Figure S18. Seasonal changes in daily mean temperature in Ataquines meteorological station (code 2516).

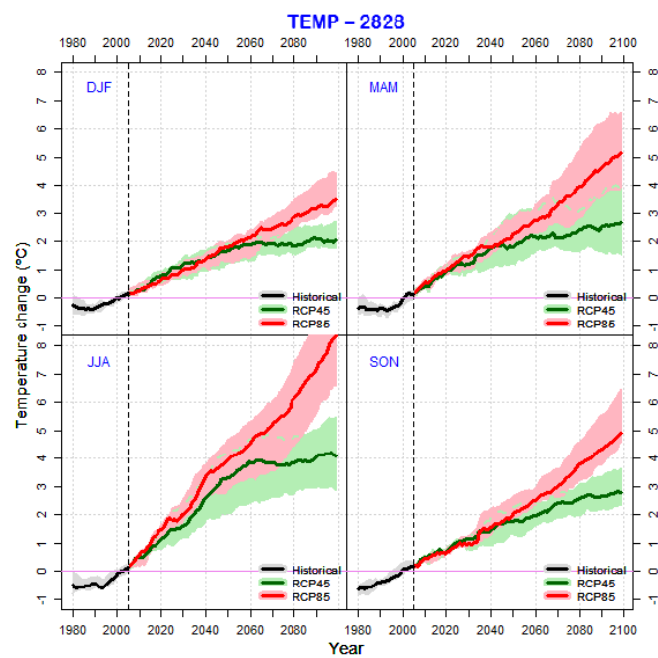


Figure S19. Seasonal changes in daily mean temperature in El Barco de Ávila meteorological station (code 2828).

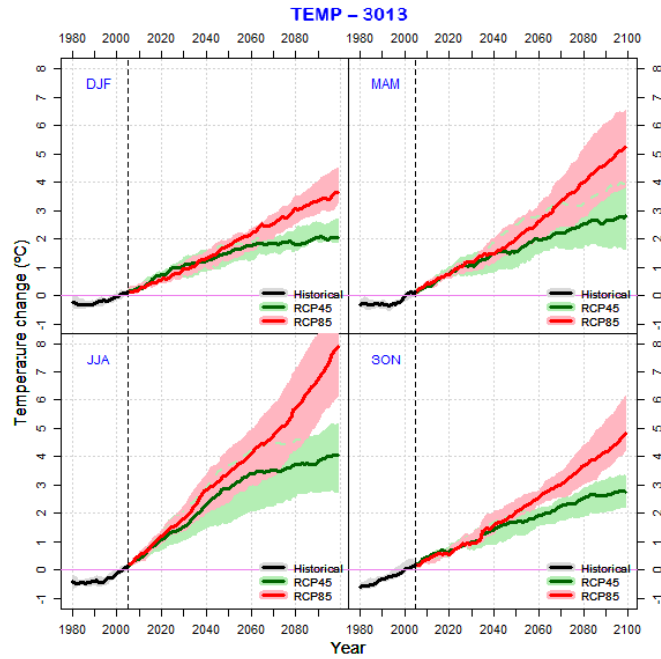


Figure S20. Seasonal changes in daily mean temperature in Molina de Aragón meteorological station (code 3013).

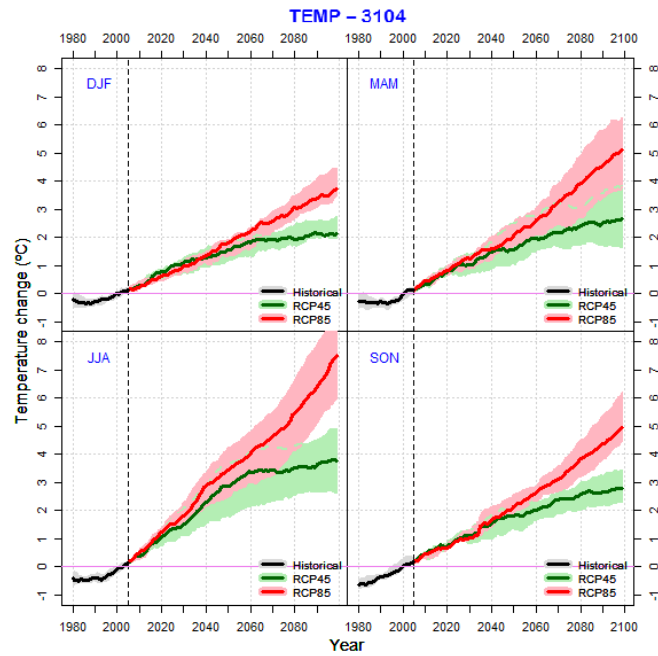


Figure S21. Seasonal changes in daily mean temperature in Rascafría-El Paular meteorological station (code 3104).

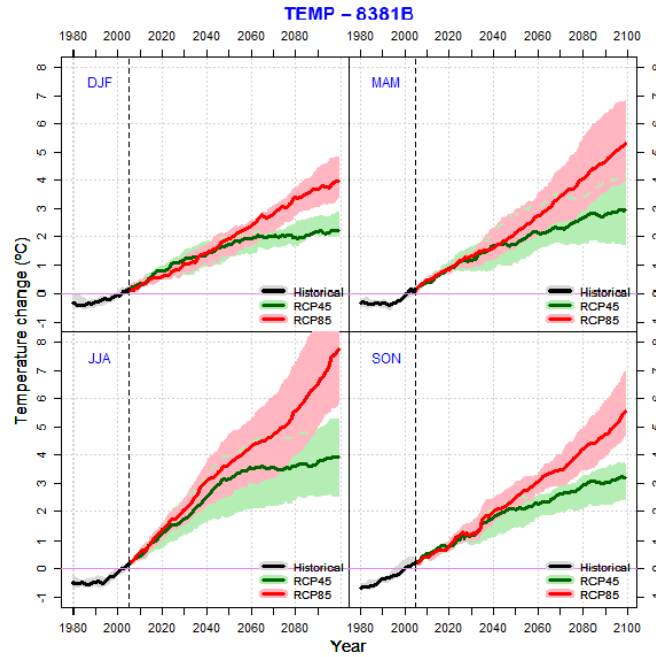


Figure S22. Seasonal changes in daily mean temperature in Ademuz-Agro meteorological station (code 8381B).

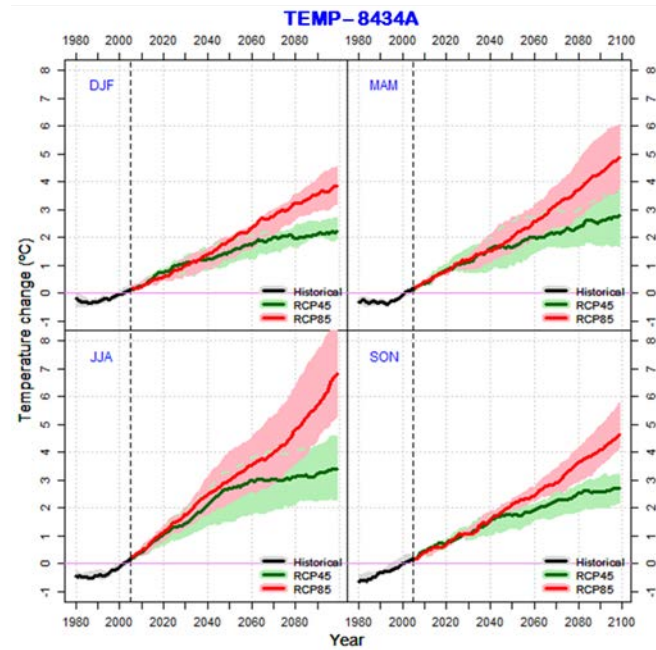


Figure S23. Seasonal changes in daily mean temperature in Viver-Agro meteorological station (code 8434A).

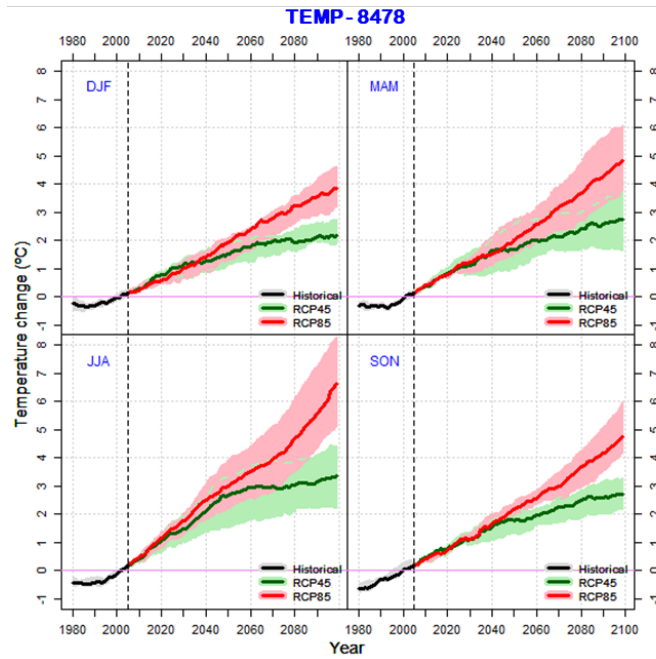


Figure S24. Seasonal changes in daily mean temperature in Arañuel meteorological station (code 8478).