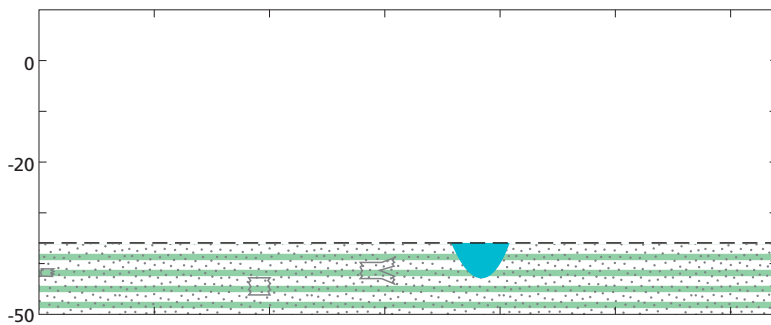


Height (m) relative to benchmark



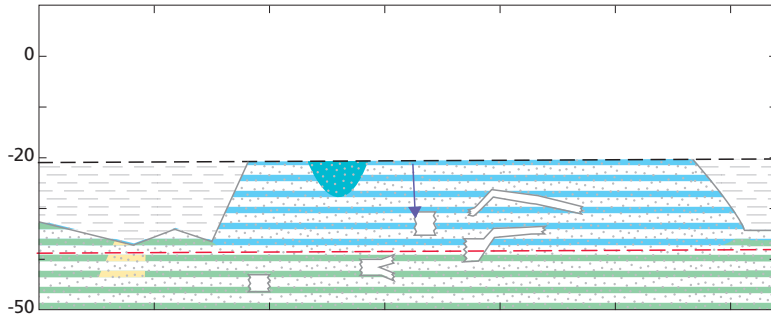
Phase 1. Transgression (10 ka–7 ka BP)

Geology

- Rapid sand deposition

Hydrology

- Increasing salinity



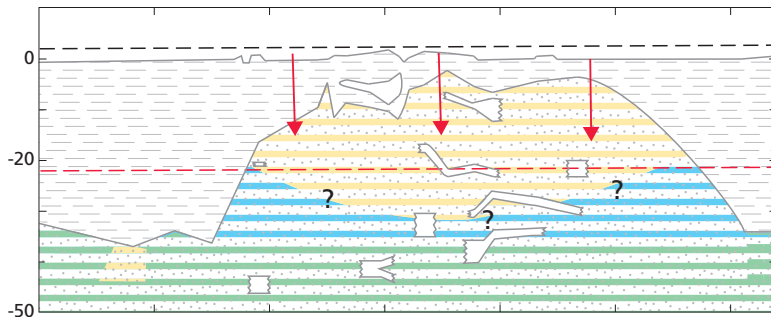
Phase 2. Progradation (around 7 ka–5/2.5 ka BP)

Geology

- Limited meandering
- Clay deposited in floodplains
- Sand deposited in channel

Hydrology

- Decreasing salinity
- Limited influence at north/south side



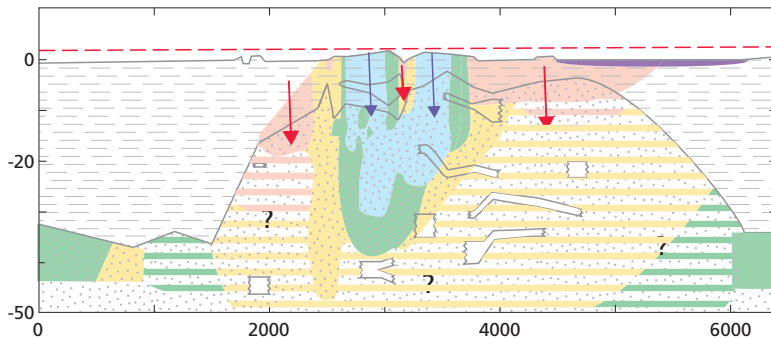
Phase 3. Migration Ganges (5/2.5 ka–present)

Geology

- Uniform clay deposition
- Formation of elevation differences

Hydrology

- Hydrologic conditions unknown,
but salinity expected to have increased
- Limited influence at north/south side



Phase 4. Contemporary processes

Hydrology

- Freshening elevated areas
by rain and rain-fed ponds
- Salinization in low lying areas by marine-
influenced water
- Salinization from aquaculture ponds

Distance along transect (m)

